



Top Notch Officials/Metropolitan
Officials Association

OFFICIALS' BASKETBALL CAMP

June 7th, June 8th
2024

OAK LAWN COMMUNITY HIGH SCHOOL
9400 Southwest Hwy
Chicago, Illinois 60453

To register:

Please complete the enclosed
registration form and return with
your camp registration fee of:

\$ 40.00

Make checks payable to:
TOP NOTCH/MOA Officials'
Basketball Camp

Mail to:

Pamela D. Young
4343 N. Clarendon #1006
Chicago, IL 60613

(Zelle, Cash App, options available)

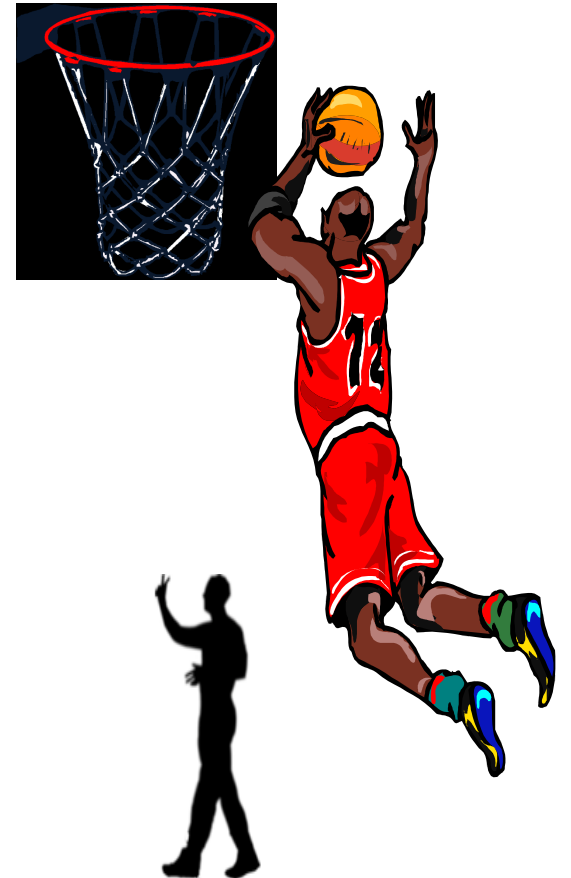
Please direct questions to:

Vern (773)671-1910
Kevin (773)319-6553
Pam (312)388-1852

CERTIFIED CLINIC

*TOP NOTCH/METROPOLITAN OFFICIALS
ASSOCIATIONS*

OFFICIALS' BASKETBALL CAMP



June 7 – 8, 2024



de

REGISTRATION INFORMATION

Friday, June 7th, 2024
Registration

10:30 am — 11:00am

Classroom/floor work 11:00am-8:00pm

Welcome/Guest Speaker
Instructional Film
Three-Person Mechanics
Two-Person Mechanics

Floor Work Courts 1,2,3,4
Classroom/Review

Saturday June 8th, 2024
Classroom/Review

Floor Work Courts 1,2,3,4
Playoffs & Championships
9:00am – 6:00pm



CLINICIANS and OBSERVERS

DONNA MOBLEY

IHSA State Tournament Official
Collegiate Official

ASHLEY LOGAN

IHSA State Tournament Official
Collegiate Official

DARRYL SHELTON

IHSA State Tournament Official
Collegiate Official

LARHONDA CONNER

IHSA Official
Collegiate Official

PAUL MOSELEY

IHSA Certified Clinician
IHSA State Tournament Official

VERNAL TURNER

Camp Co-Director
IHSA Certified Clinician
IHSA State Tournament Official

KEVIN WHITE

Camp Co-Director
IHSA Certified Clinician
IHSA State Tournament Official

PAMELA YOUNG

Camp Co-Director
IHSA Certified Clinician
IHSA State Tournament Official

NBA OFFICIALS

Observers

ASSIGNORS



CAMP HIGHLIGHTS

- ▶ 24 high school girls teams
- ▶ Illinois high School Certified 6-hour Camp (meets state requirements)
- ▶ Excellent opportunity for female officials
- ▶ observers and assignors
- ▶ Daily individual critique and classroom lectures by experienced and qualified staff
- ▶

Each camper should bring:

Black official shoes

White socks

Officials Shirt

Black shorts

WHISTLE AND LANYARD

Healthy Body

Great Attitude

AMIABLE PERSONALITY